



SEtexas™

stronger. safer. smarter.™

 **monarchseries**
a product of SEtexas

2008-2009 Product Guide



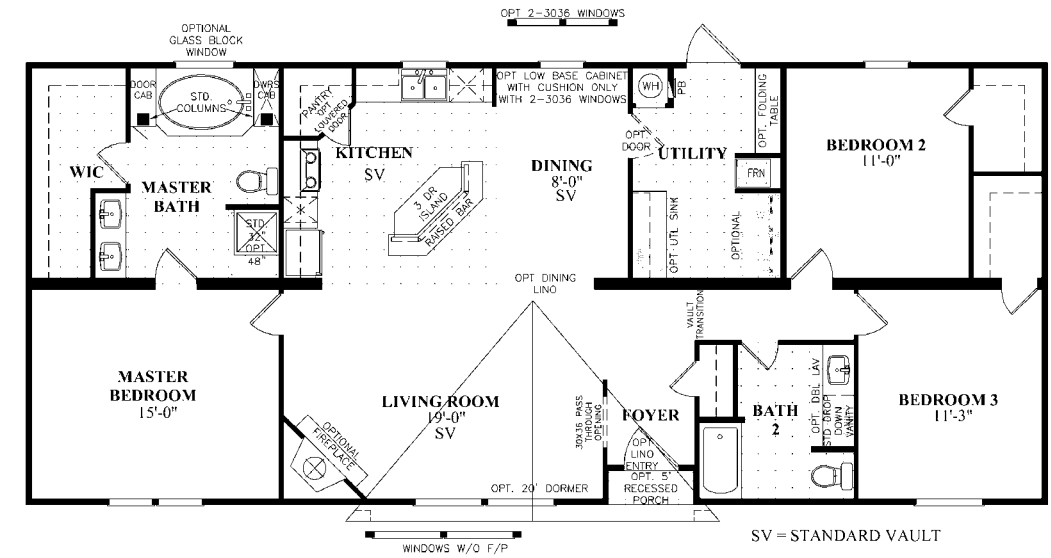
MC 3641

SE **monarchseries**
a product of SETexas

Hansen	MC 2481	4
Nelson	MC 2601	5
Morrow	MC 2761	5
Norton	MC 3401	6
Gardner	MC 3481	6
Baycrest	MC 3482	7
Bradshaw	MC 3521	8
Horizon	MC 3561	8
Layne	MC 3601	9
Hogan	MC 3602	11
Destiny	MC 3641	11
Watson	MC 3681	12
Conley	MC 3761	13
Landry	MC 3762	13
Jackson	MC 3763	14
STANDARD FEATURES		15
DECOR OPTIONS		16



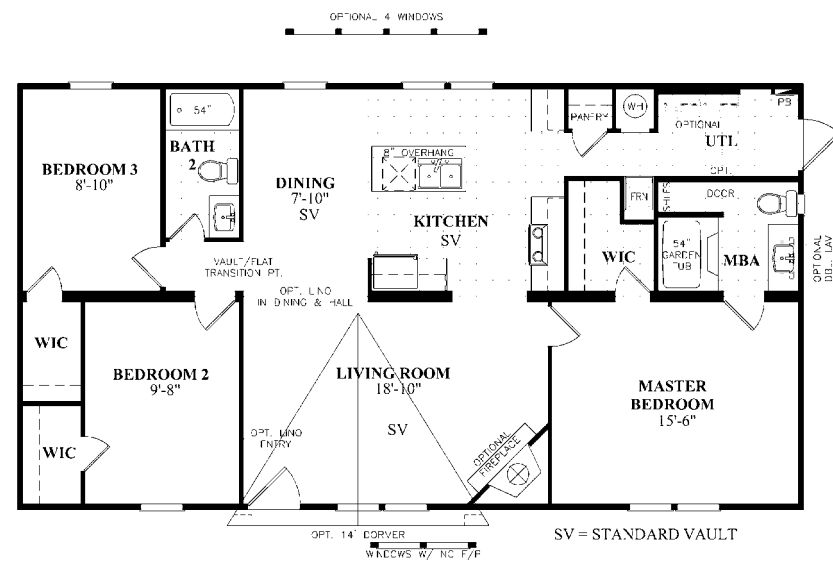
MC 3641



THE Nelson

MC 2601

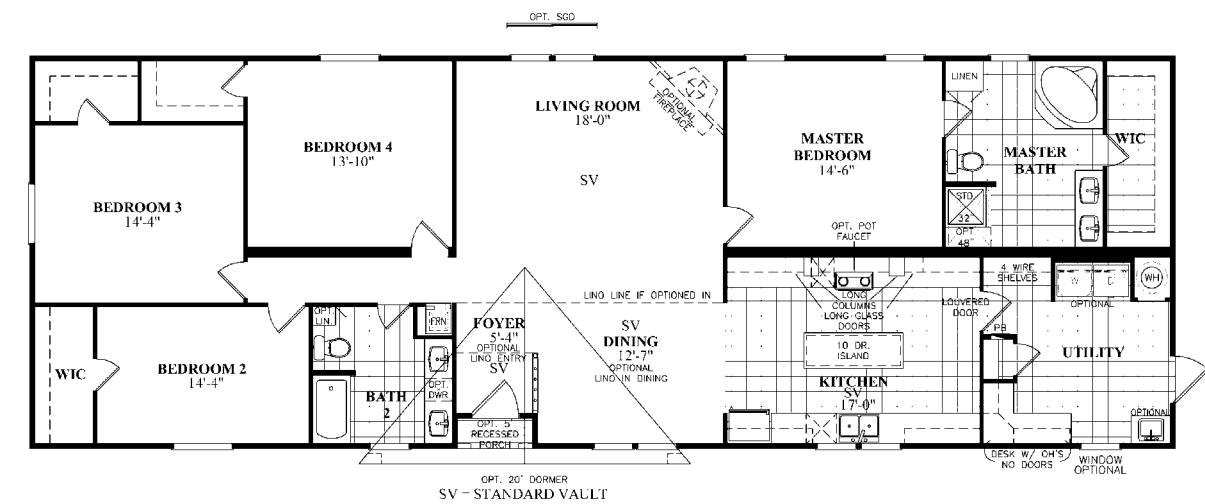
1,560 sq ft - 3 Bedroom/2 Bath - 28x60 (64)



THE Hansen

MC 2481

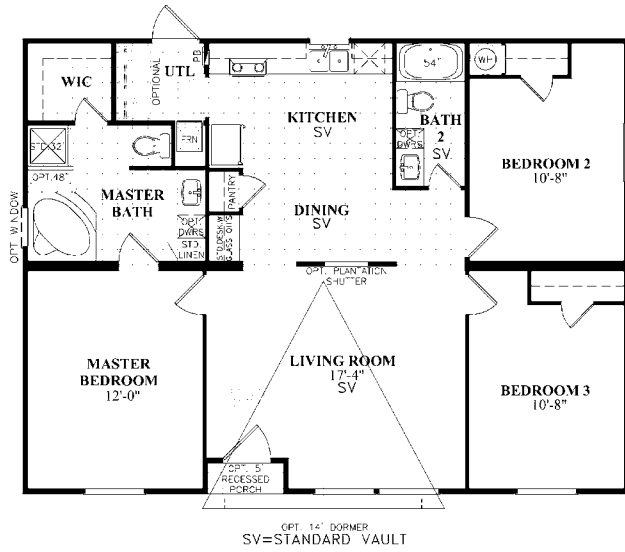
1,248 sq ft - 3 Bedroom/2 Bath - 28x48 (52)



THE Morrow

MC 2761

1,976 sq ft - 4 Bedroom/2 Bath - 28x76 (80)



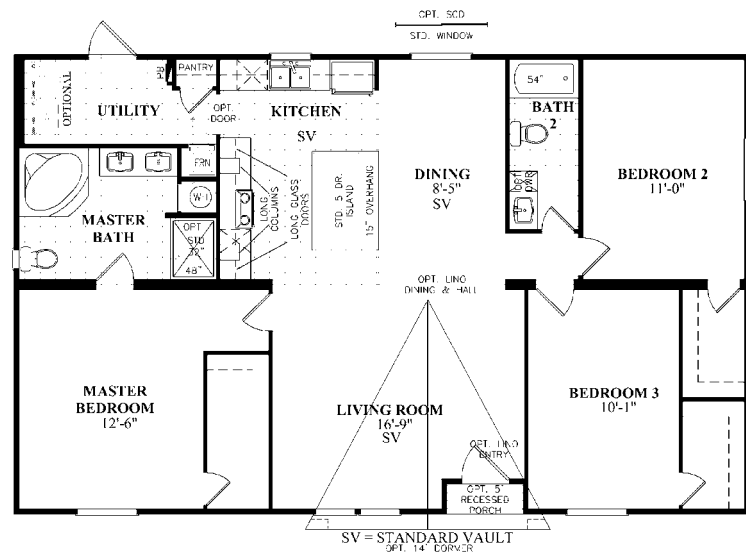
THE Norton

MC 3401

1,200 sq ft - 3 Bedroom/2 Bath - 32x40 (44)



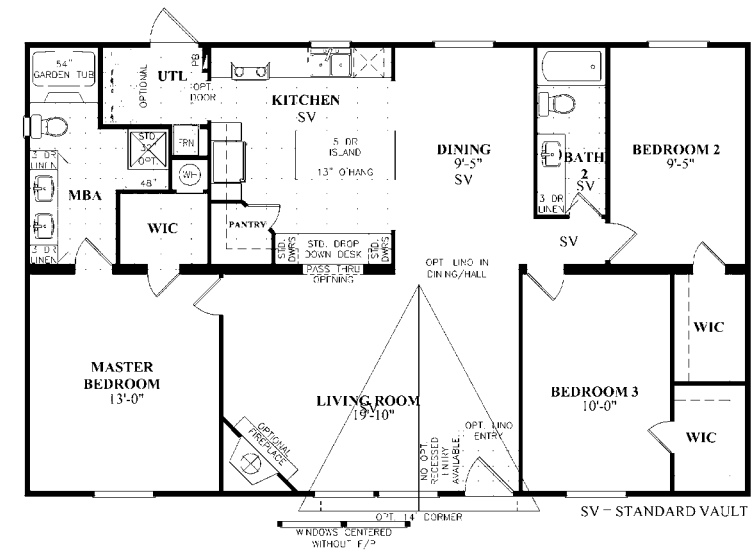
MC 3482



THE Gardner

MC 3481

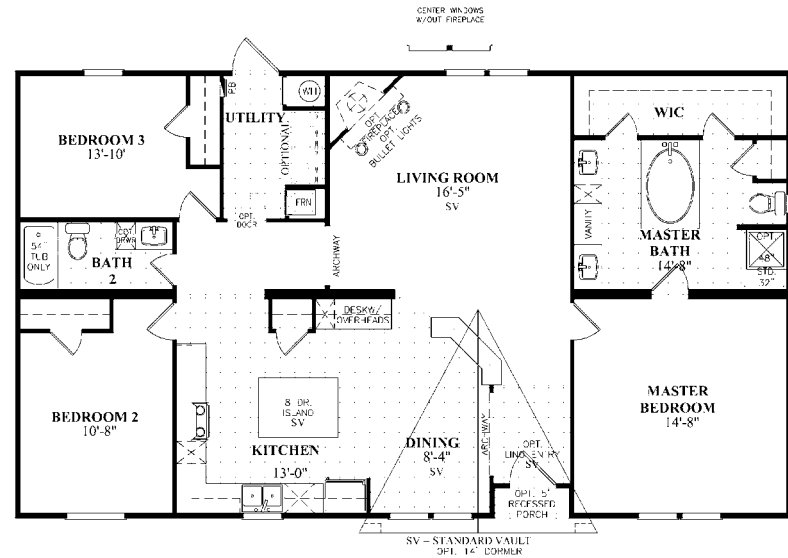
1,440 sq ft - 3 Bedroom/2 Bath - 32x48 (52)



THE Baycrest

MC 3482

1,440 sq ft - 3 Bedroom/2 Bath - 32x48 (52)



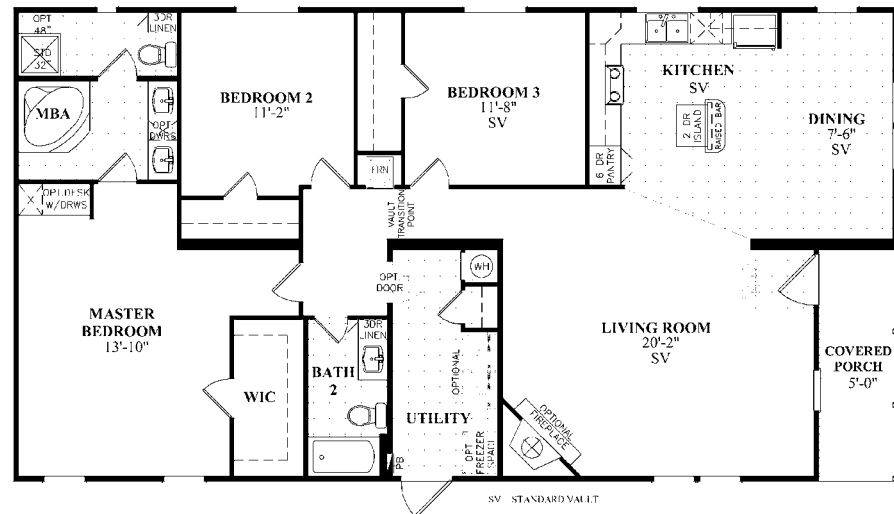
THE Bradshaw

MC 3521

1,560 sq ft - 3 Bedroom/2 Bath - 32x52 (56)



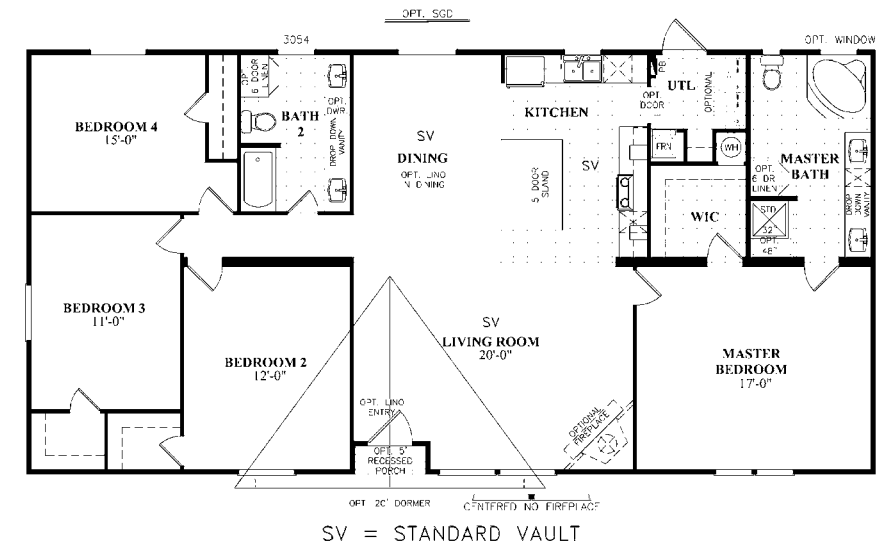
MC 3641



THE Horizon

MC 3561

1,680 sq ft - 3 Bedroom/2 Bath - 32x56 (60)



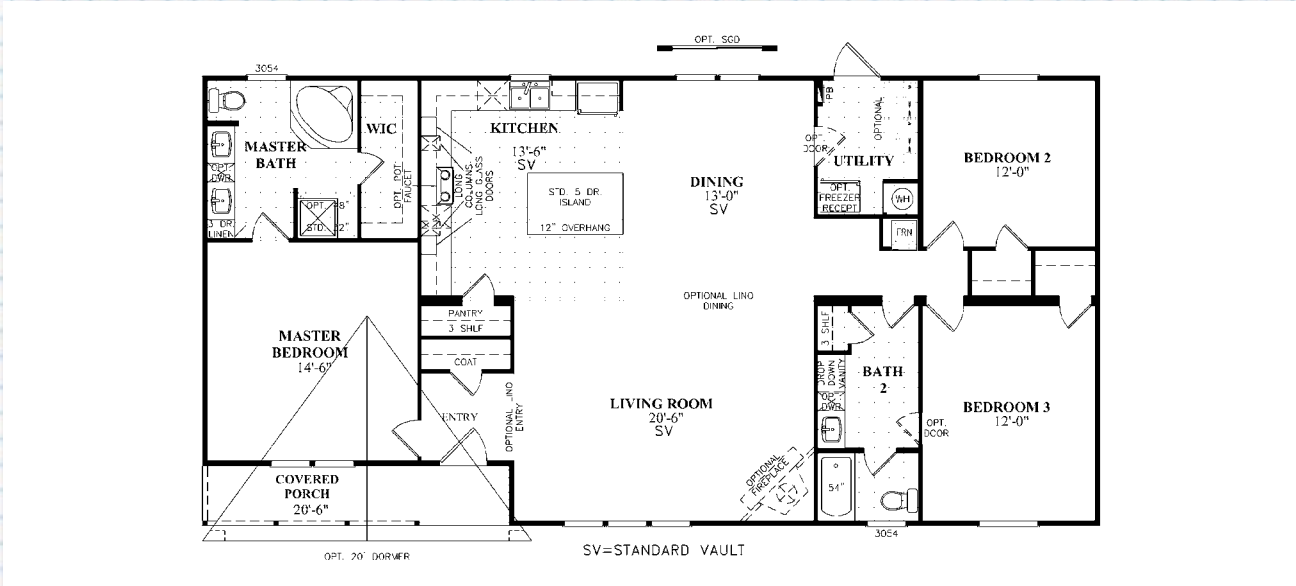
THE Layne

MC 3601

1,800 sq ft - 4 Bedroom/2 Bath - 32x60 (64)



MC 3641



THE **Hogan** MC 3602

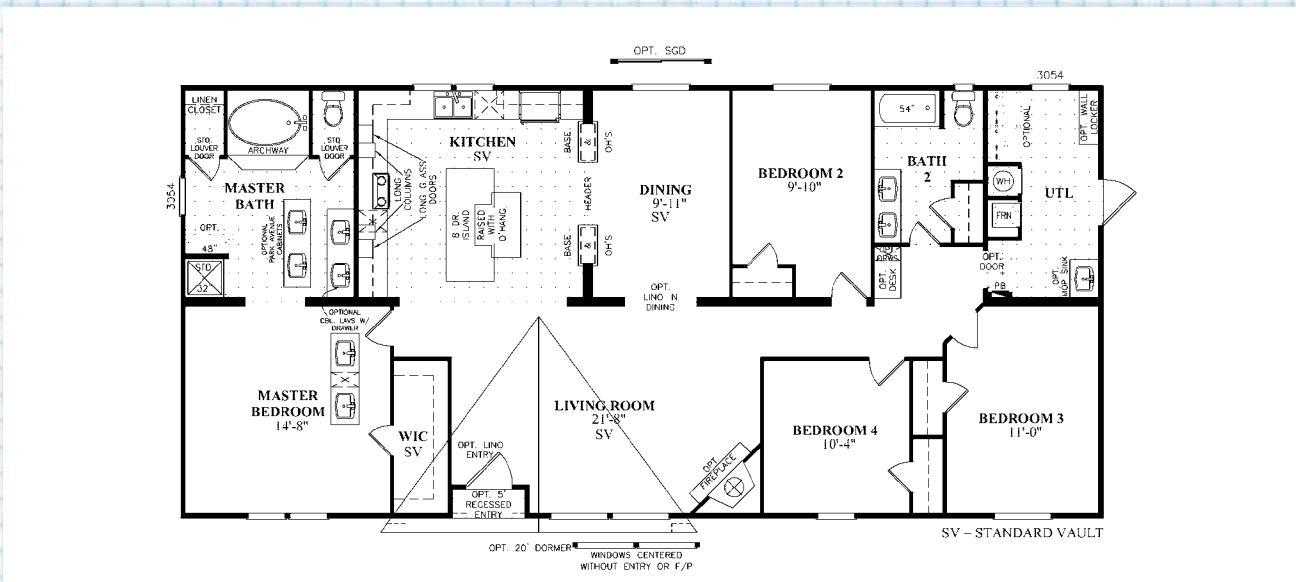
1,800 sq ft - 3 Bedroom/2 Bath - 32x60 (64)



MC 3641



MC 3641

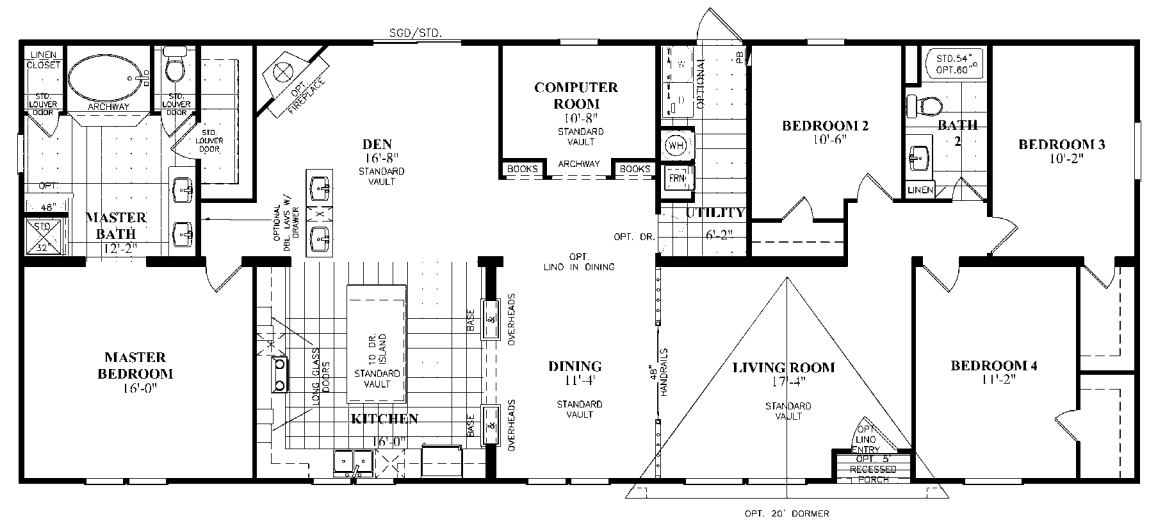


THE **Destiny** MC 3641

1,920 sq ft - 4 Bedroom/2 Bath - 32x64 (68)

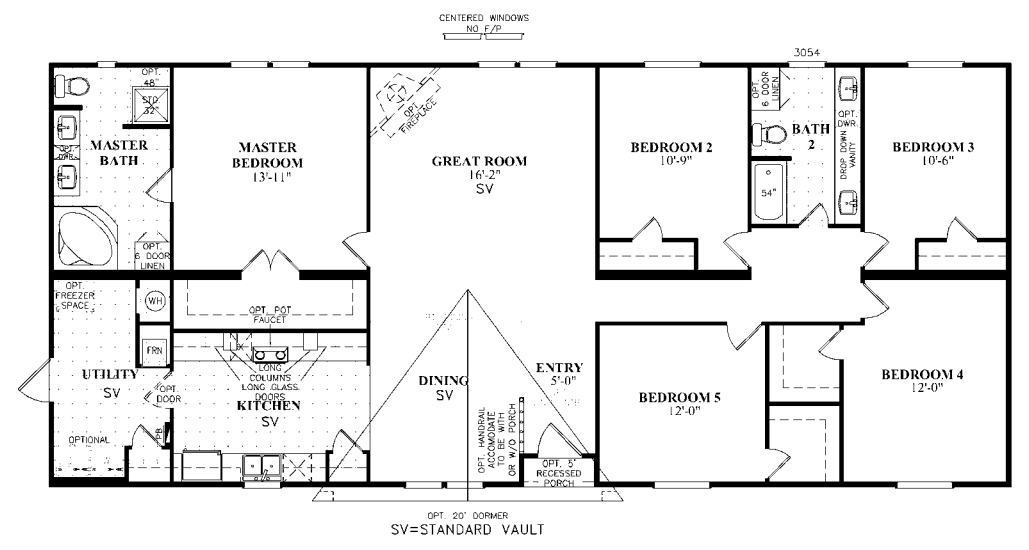


MC 3482



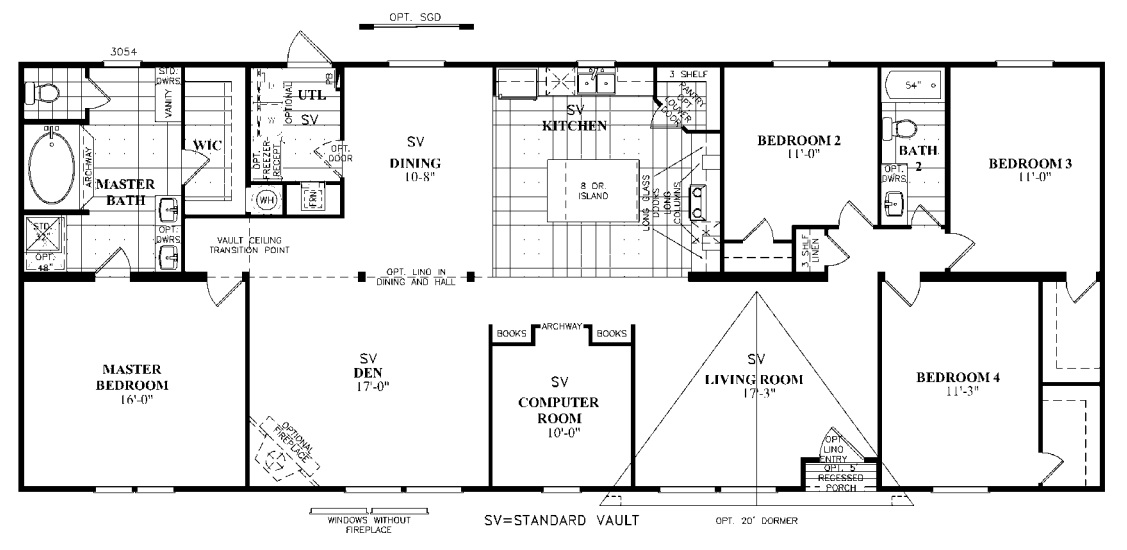
THE **Conley** MC 3761

2,280 sq ft - 4 Bedroom/2 Bath - 32x76 (80)



THE **Watson** MC 3681

2,040 sq ft - 5 Bedroom/2 Bath - 32x68 (72)



THE **Landry** MC 3762

2,280 sq ft - 4 Bedroom/2 Bath - 32x76 (80)



MC 3482

SE monarchseries Standards

a product of SETexas

EXTERIOR AND CONSTRUCTION

- Detachable Hitches
- Composition Shingle Roof
- Vinyl Siding With Foam Core Backer
- Vinyl Shutters Front Door Side
- Nominal 12" Eaves On Multi-Section Homes
- 34" x 76" House Type Front Door w/Storm
- 34" x 76" Blank Rear Door
- Single Pane White Metal Windows
- Steel I-Beam Frame with Full Length Outriggers
- 2" x 4" Exterior Walls 16" O C
- 2" x 6" Floor Joists on 28' Wide Homes - 16" O C
- 2" x 8" Floor Joists on 32' Wide Homes - 16" O C
- Exterior GFCI Receptacle
- Porch Lights at All Exterior Doors
- Tongue and Groove OSB Floor Decking
- 90" Sidewall Height

INTERIOR FEATURES

- Plush -16 oz. Carpet With Tack Strip
- White Interior Passage Doors
- Nickel Door Handles
- Alternate Vaulted Ceilings
- Ceiling Lights in All Bedrooms
- Central Water Shut Off Valve
- Designer Coordinated Drapery Package
- 1" Mini Blinds Through Out
- White Vinyl Wrapped Wire Shelving
- Designer Coordinated Sheet Rock Walls
- Floor Mounted Door Stops
- Nickel Pulls
- Blown Acoustic Ceilings

ENERGY, SAFETY, AND UTILITY FEATURES

- Total Electric With 200 Amp Service
- 30 Gallon Electric Water Heater
- R-21 Roof Insulation
- R-11 Side Wall Insulation
- R-11 Floor Insulation
- Washer and Dryer Connections
- Hard Wired Smoke Detectors with Battery Backup

KITCHEN

- Dual Handle Faucet
- 30" MDF Picture Frame Cabinet Doors
- 6" Stainless Steel Sink
- Drawer Bank in Kitchen
- Lined Overhead Kitchen Cabinets
- Fixed Shelves in Overhead Cabinets
- Shelf Above Refrigerator
- Dual Steel Drawer Guides
- GE® 16CF Frost Free Refrigerator
- GE® Electric Range

BATH FEATURES

- Legacy Plus Premium Grade Lino in All Baths
- Exhaust Fans
- Privacy Door Locks
- Dual Handle Faucets
- Shut-off Valves
- Glamour Bath With 32" Shower
- (By Plan)

POPULAR OPTIONS

- Dormer
- Smart Panel Siding
- Up Flow Furnace with Overhead Ducts
- Ceramic Tile Backsplash
- Ceramic Edge
- One Piece Fiberglass Tub/Shower
- Appliance Packages
- China Lovies
- Fireplace with Wood or Hand Laid Rock
- Storm Windows
- Thermal Pane Windows
- 2 x 6 Exterior Walls with R-19 Insulation
- Thermal Zone II and III
- Wind Zone II and III by Plan

THE Jackson MC 3763

2,280 sq ft - 4 Bedroom/2 Bath - 32x76 (80)

All contents of this brochure are for reference only. All information is subject to change without notice or obligation. Contact your sales representative for price quotes and any other questions. All color swatches and images are approximations only. Colors may vary by lot. There may also be variations in color translations when printing.



Cabinets Standard | Golden Cherry



Cabinets Upgrade | Oak **UPGRADE**



Countertops | Butter Rum Granite (7732-58)



Cabinets Standard | Merry Maple



Cabinets Upgrade | Chocolate **UPGRADE**



Countertops | Travertine (3526-58)



Main Wallboard | Bisque



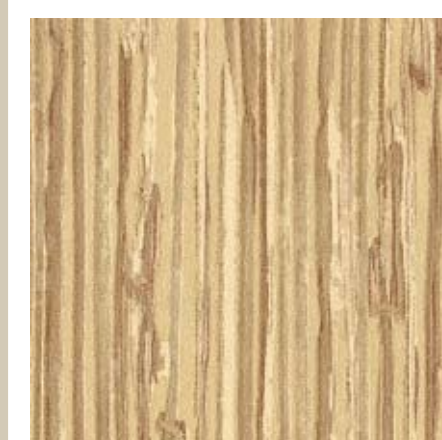
Kit & Bath Wallboard | Caramel Sunset



Accent Wallboard | Copper



Main Wallboard | Skandia Suede



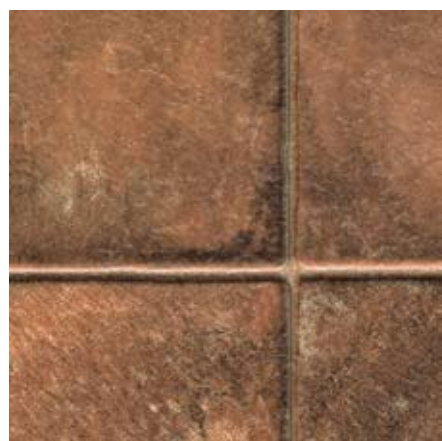
Kit & Bath Wallboard | Grasscloth Desert



Accent Wallboard | Moonlight



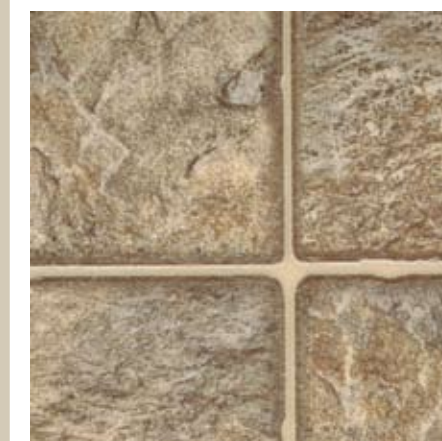
Ceramics | Sunrise (SB52)



Linoleum | Terra Cotta Clay



Ceramics | Sunrise (SB52)



Linoleum | Caramel Slate



Cabinets Standard | Merry Maple



Cabinets Upgrade | Chocolate **UPGRADE**



Countertops | Labrador Granite



Main Wallboard | Meadow



Kit & Bath Wallboard | Oaks II Granite



Ceramics | Walnut



Linoleum | Caramel Slate

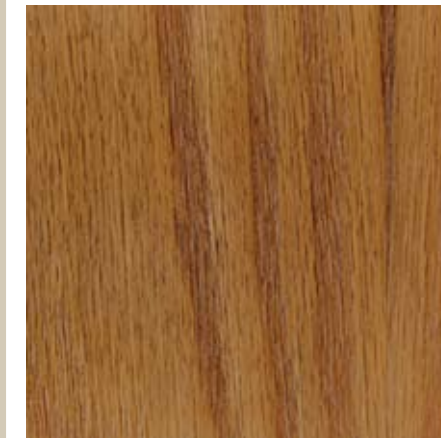


Alternative Linoleum | Woodgrain

(AVAILABLE WITH ANY DECOR)



Cabinets Standard | Golden Cherry



Cabinets Upgrade | Oak **UPGRADE**



Countertops | Giallo Granite



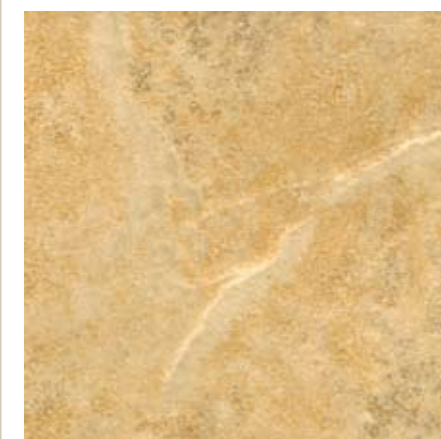
Main Wallboard | Topaz



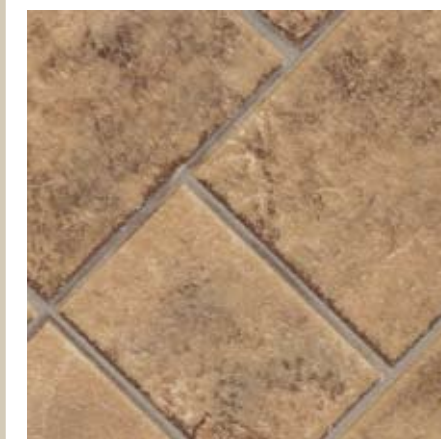
Kit & Bath Wallboard | Newton Spice



Accent Wallboard | Crimson



Ceramics | Harvest (SB51)



Linoleum | Amber Gold



8701 Harmon Road
Fort Worth, TX 76177

866.847.1355



sehomes.com